



MOTOROLA

MOTOSTART

DC800 Bluetooth® Home Stereo Adapter

Get Connected in 5 Quick Steps

- 1 - 2 CONNECT
- 3 - 4 PAIR
- 5 TEST AND USE



Before using this product, read the Important Safety and Legal Information pamphlet and follow its instructions.

Follow the numbered steps to connect and use a Motorola Bluetooth® DC800 Home Stereo Adapter.

Note: The DC800 Home Stereo Adapter is a Class 1 Bluetooth device. Bluetooth features and Bluetooth Class 1 power levels are not allowed for outdoor operation in France. To avoid unlawful interference with radio signals, do not use the Bluetooth features in France unless you are indoors.

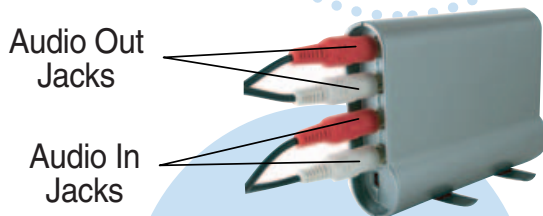
Note: To operate with the DC800 Home Stereo Adapter, your Bluetooth audio device must support A2DP Profile capability.

Note: To maintain compliance with RF exposure guidelines, you must keep the DC800 Home Stereo Adapter at least 20 centimeters (8 inches) away from any person.

①

AUDIO CONNECTIONS

Make the following audio connections to your stereo adapter (using the supplied cables):



- 1 Connect the Audio Out jacks on the stereo adapter to unused Audio In jacks on your home stereo system.
- 2 Connect the Audio In jacks on the stereo adapter to unused Audio Out jacks (such as Tape Out) on your home stereo system.

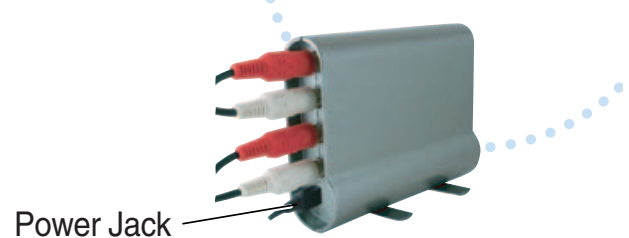
Note: If your home stereo does not support Line Out audio, you may have to connect through the headphone jack with the included RCA-to-headphone cable.

Note: To stream music from your phone (when equipped with 2.5mm stereo output jack), use the included RCA-to-2.5mm cable to connect to the adapter's Audio In jacks.

②

POWER CONNECTIONS

Make the following power connection to your stereo adapter:



- 1 Plug the included AC power supply into the Power Jack on the stereo adapter.
- 2 Plug the other end of the AC power supply into a wall outlet.

3 PAIR WITH BLUETOOTH HEADSET

Enable your stereo adapter to transmit music to your Bluetooth wireless headphone:

Note: This guide does not provide steps for pairing your stereo adapter with a Bluetooth USB PC Adapter or a Bluetooth-enabled PC. Consult the USB Adapter or PC's user guide for details on completing this step.

- 1 Holding your headphone close to the stereo adapter, place the headset into pairing mode.

If using the Motorola HT820 Bluetooth Stereo Headphone, place in pairing mode by pressing and holding the headphone's Call button for approximately 6 seconds until the indicator light is solidly lit. For other products, refer to your headset's user's guide for details.

- 2 Turn on the stereo adapter by pressing in the **Power** button. After a few moments, the **Pairing** Button indicator light begins blinking to indicate the power is on.

Motorola, Inc.
Consumer Advocacy Office
1307 East Algonquin Road
Schaumburg, IL 60196

www.hellomoto.com
1-877-MOTOBLU
1-800-331-6456 (United States)
1-888-390-6456 (TTY/TDD United States for hearing impaired)
1-800-461-4575 (Canada)

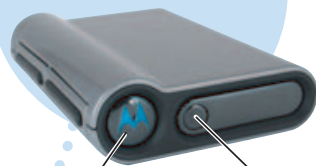
Part Number: 6809494A97-C

MOTOROLA and the Stylized M Logo are registered in the US Patent & Trademark Office. The Bluetooth trademarks are owned by their proprietor and used by Motorola, Inc. under license. All other product or service names are the property of their respective owners.

The use of wireless devices and their accessories may be prohibited or restricted in certain areas. Always obey the laws and regulations on the use of these products.

© Motorola, Inc. 2005.

3 PAIR WITH BLUETOOTH HEADSET CONTINUED



- 3 Press and hold the **Pairing** button on the stereo adapter until the indicator light remains solidly lit (about 5 seconds).

The stereo adapter searches for Bluetooth devices. When the stereo adapter finds the headphone, the indicator light rapidly flashes indicating that pairing is successful.

Once the connection is established, the indicator light changes to a slower, pulsing light.

4 PAIR WITH BLUETOOTH PHONE

Enable your stereo adapter to receive music from the built-in MP3 player of your Bluetooth A2DP-capable phone:

Note: These steps are for most Motorola phones. Certain phones require additional steps to enable stereo audio streaming (A2DP Profile). See your phone's user's guide to verify proper steps.

- 1 Turn on the stereo adapter by pressing in the **Power** button. After a few moments, the **Pairing** button indicator light begins blinking to indicate the power is on.
- 2 From the phone, perform a Bluetooth device discovery while holding it close to the adapter.
 - The phone lists Bluetooth devices it finds.
- 3 Select **Motorola DC800**.
- 4 Select **OK** or **Yes** to pair your stereo adapter and phone.
- 5 Enter the passkey: **0000**
- 6 Select **OK**. The Pairing button indicator light flashes rapidly to indicate pairing is successful.

5 TEST AND USE

Verify the **headphone and stereo adapter** work together:

- 1 On your home stereo system, play music from your favorite source and turn the stereo receiver to that source.
- 2 Place the headphone on your head.
If your stereo adapter and headphone are successfully paired, you will hear music on the headphone.

To verify the **phone and stereo adapter** work together:

- 1 On your phone, select and play MP3 music.
- 2 On your home stereo system, select the input the adapter is connected to.
If your stereo adapter and phone are successfully paired, you will hear the MP3 music on your home stereo system.

TROUBLESHOOTING

My stereo adapter doesn't find my headphone.

Make sure the headphone is close to the stereo adapter and in pairing mode, and the Pairing button indicator light on your stereo adapter is on and steady (see step 3).

My stereo adapter worked with my phone before but now it's not working.

Make sure your phone is on and the Bluetooth feature is turned on in your phone. If the Bluetooth feature was turned off or was turned on only temporarily, you may need to restart the Bluetooth feature and pair your phone and stereo adapter again (see step 4).

Support.

If you need more help, contact us at **1- 877-MOTOBLU.**

FOR DETAILS ABOUT YOUR STEREO ADAPTER

visit us at www.hellomoto.com/bluetooth and click **Support.**

Features and Functions Guide

DC800 Bluetooth® Home Stereo Adapter



IMPORTANT:

Be sure to first follow the **Quick Start Guide** on the reverse side to complete initial setup of your DC800.

FEATURES

Your DC800 Home Stereo Adapter connects to your home audio system and turns it into a wireless music system. With your DC800, you can:

- Listen to music from your Bluetooth phone's built-in MP3 player over your home audio system speakers (for phones that support streaming stereo music over Bluetooth using A2DP profile).
- Play music on your home audio system and send the music wirelessly to your Motorola Bluetooth Stereo Headphone.
- Use the stereo adapter's high power Bluetooth (Class 1) with other Class 1 devices to roam around your house further than the 30 foot range of most Bluetooth products.

FEATURES *CONTINUED*

- Play MP3s from your home computer or laptop and listen to them over your home audio speakers using the Motorola Stereo PC Adapter or embedded Bluetooth module.
- Use your stereo adapter with any Bluetooth stereo audio device, even products from other manufacturers.

FRONT PANEL CONTROLS

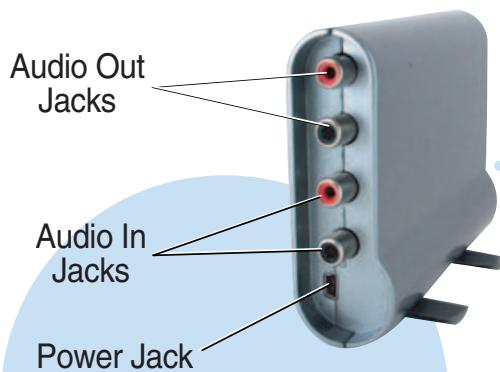
The DC800 Home Stereo Adapter contains the following front panel controls and indicators.



Housing feet are built-in and can be rotated 90 degrees allowing the stereo adapter to stand vertically. For horizontal orientation, the feet remain flush for compact storage.

BACK PANEL CONNECTORS

The DC800 Home Stereo Adapter contains the following back panel connectors.



When you see this symbol on a Motorola product, do not dispose the product with household waste.

Recycling Mobile Phones and Accessories

Do not dispose of mobile phones or electrical accessories, such as chargers or headsets, with your household waste. In some countries or regions, collection systems are set up to handle electrical and electronic waste items. Contact your regional authorities for more details. If collection systems aren't available, return unwanted mobile phones or electrical accessories to any Motorola Approved Service Centre in your region.

OPERATING WITH BLUETOOTH DEVICES

Once paired with a Bluetooth device, the stereo adapter automatically connects to the device when it is in range and turned on.

The DC800 Home Stereo Adapter stores pairing information for up to eight Bluetooth devices. Device IDs are stored in the gateway's memory in the order entered. If you try to pair with more than eight devices, the oldest paired device is removed from memory.

DC800 FUNCTIONS

Function	Action
Turn On DC800	Press in the Power button. The DC800 attempts to connect to the last device it was connected to.
Enter Pairing Mode	Press and hold the Pairing button until the indicator light remains solidly lit (about 5 seconds). The DC800 scans for Bluetooth devices.
Stop Audio Transmission (audio is transmitting)	Tap Pairing button.
Reenable Audio Transmission	Tap Pairing button. Indicator light blinks with a slow pulse.
Turn Off DC800	Press the Power button.

INDICATOR LIGHTS

The Pairing button indicator light provides status information about your DC800.

Indicator Light	Status
Off	Power off
On (steady)	Pairing mode
10 rapid flashes	Pairing successful
Slow pulse	Connected (music playing)
Quick flash	Standby (not music playing)

For additional assistance visit our website at:

www.hellomoto.com/bluetooth

or call Motorola Help desk at:

1-877-MOTOBLU (1-877-668-6258)